

**MAONE** /fr  
IMAGINATION CONTINUED



SOLID



▲ MA416  
Milky White



▲ MA418  
Bright Red



▲ MA432  
Indigo Blue



▲ MA404  
Jolly Yellow



▲ MA411  
Red



▲ MA417  
Telecom Blue



▲ MA419  
Yellow



▲ MA427\*  
Apple Green



▲ MA409  
Dark Blue



▲ MA431\*  
Orangji



▲ MA428\*  
Vernal Green



▲ MA410\*  
Pink



▲ MA406  
Orange



▲ MA413  
Light Green



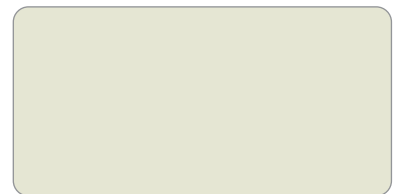
▲ MA421  
Ink Berry



▲ MA429  
Scarlet



▲ MA420\*  
Lotus Green



▲ MA403  
Ivory



▲ MA430\*  
Saffron Red



▲ MA422  
New Budding Green



▲ MA425  
Ebony

\* Special Item, Please ask for more details from the sales executive.

SOLID



▲ MA423  
Mocha Brown



▲ MA447\*  
Aluminum Gray



▲ MA412  
Black



▲ MA424  
Cocoa Bud



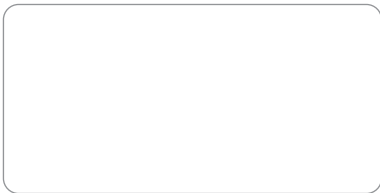
▲ MA415  
Dark Gray



▲ MA313  
SCB Violet



▲ MA446\*  
Cardina Red



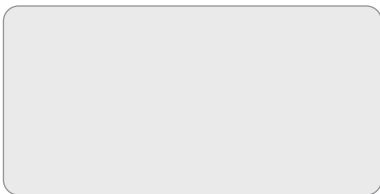
▲ MAS537G  
Glitzy Pure White



▲ MAS539G  
Glitzy Red



▲ MAS525\*  
Sparkling Deep Blue



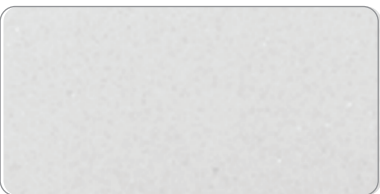
▲ MAS533G  
Sparkling Swan



▲ MAS538G  
Glitzy Galaxy



▲ MAS518S\*  
Shimmer Red



▲ MAS514\*  
Sparkling Pure White

SOLID

SPARKLING

METALLIC



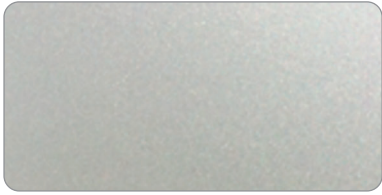
▲ MA501  
Bright Silver Metallic



▲ MA510  
Brown Metallic



▲ MA528\*  
Italian Metallic Brown



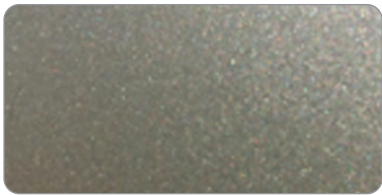
▲ MA502  
Silver Gray



▲ MA507  
Metallic Gold



▲ MA521  
Timber Metallic



▲ MA504  
Champagne Silver Metallic



▲ MA508  
Brassy



▲ MA506  
Metallic Black



▲ MA513  
Charcoal Gray



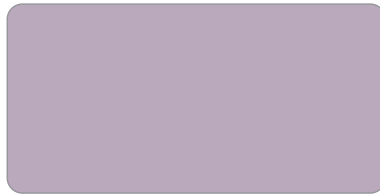
▲ MA512  
Durana Copper



▲ MA509  
Jade Green Argent



▲ MA503  
Champagne



▲ MA523\*  
Sweet Peony



▲ MA519  
Winter Sky

NANO



▲ MA501N  
Bright Silver Metallic (Nano)

All colours can be nano meter coating

SPECTRA



▲ MA701\*  
Spectra Jewel



▲ MA702\*  
Spectra Red Brass



▲ MA710\*  
Spectra Green Leadon



▲ MA711\*  
Spectra Light Blue Green Pearl

\* Special Item, Please ask for more details from the sales executive.

GLOSSY



▲ MA309  
Snow White



▲ MA305\*  
Budding Green



▲ MA308  
Bright Blue



▲ MA303G  
Lip Gloss



▲ MA312\*  
Light Turquoise



▲ MA304  
Blazer Blue



▲ MA302  
Nemo Orange



▲ MA306  
Green Parrot



▲ MA307\*  
Passion Purple



▲ MA301  
Sweet Mango



▲ MA340G\*  
Emerald



▲ MA901  
Silver Mirror



▲ MA902  
Silver Hairline



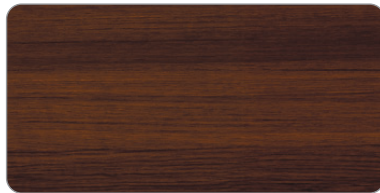
▲ MA903  
Golden Mirror



▲ MA904\*  
Copper Mirror



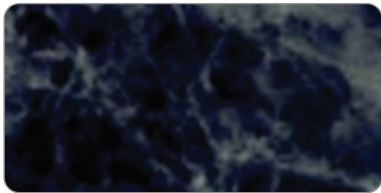
▲ MA809  
Gold Teak Wood



▲ MA810  
Brown Teak Wood



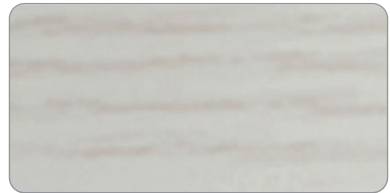
▲ MA811  
Dark Teak Wood



▲ MA855\*  
Marble Gray Stone



▲ MA803  
Natural Wood



▲ MA801\*  
White Oak

MIRROR & BRUSHED

NATURAL

\* Special Item, Please ask for more details from the sales executive.

**MAONE and MAONE/fr** aluminum composite sheet have high quality production standards. It is manufactured with modern machinery and has passed the certification of ISO 9001: 2008, ISO 14001 and CE standards to confirm the quality along with the QA (Quality Assurance) production control at every step by imported paint from the world's leading factories such as Akzo nobel, PPG, Valspar, Taiyang etc. and aluminum imported from Italy etc.









**MAONE and MAONE/fr** aluminum composite high quality material, with color coating according to the type of use, both PE (Polyester Coating System) system for internal use or PVDF coating (Polyvinylidene Fluoride Resin Coating System) for external use. Color coating system according to ARKEMA & BECKER Industrial standard, which is one of the world's leading coating system manufacturers. Users are able to choose from variety of colors such as, standard colors or color combinations or special sizes according to the needs of applications.

**MAONE and MAONE/fr** aluminum composite sheet materials have more than 80 colors to choose from. In addition, we also have stock inventory for every SKU. Ready and sufficient to meet every customer's needs.

### SGS International Standard Testing Report

Aluminum composite sheet, MAONE and MAONE/fr passed the international standard test by ASTM, AAMA, ISO The SGS Testing Center, headquartered in Switzerland and has branches all over the world. There is a testing laboratory that has been recognized as the world's leading material testing standard.

### MAONE & MAONE/fr international standard test results

Standard Test	
  International Electrotechnical Commission	Passed the toxicity test in the material according to ROHS-Restriction of Hazardous Substances which is the standard to protect the environment and for the safety of users
  	Wind Passed the Windload Test and passed the air pressure test at 1500 Pascal according to ASTM E330-2002 (2010) Passed the ASTM E119 test to prevent fire. In construction materials Passed the BS 476 test to prevent fire standards. In construction materials
  	Passed the TISTR Testing Report according to GB/T Standard Coating Requirement The quality of the coating system according to the manufacturer's standards. Passed the UL 94V standard to prevent vertical fire spread.

### Certified by



COLOR DIFFERENCE MAY BE OCCURRED IN DIFFERENT PRODUCTION BATCH, SO IT IS SUGGESTED ALL PANELS ARE PLACED IN ONE ORDER FOR THE SAME PROJECT. AS ARROW ON PROTECTIVE FILM WHEN INSTALLING TO AVOID ANY COLOR DIFFERENCE BY VISION.



**D.O.BOND COMPANY LIMITED.**

**Headquarters / Warehouse**

69/1 Moo 2, Soi Wat Ratburana,  
Theparak Road, Bang Pla, Bang Phi,  
Samut Prakan, 10540 Thailand

Tel : +66 2752 3605 - 7

Fax : +66 2752 3608

**RAMA IX Sale & Marketing Office**

30 Soi Seri4, Suan Luang, Suan Luang  
District, Bangkok, 10250 Thailand.

Tel : +66 2300 5250

Fax : +66 2300 5251

E-mail : [info@dobcl.com](mailto:info@dobcl.com)  
[www.dobcl.com](http://www.dobcl.com)

